

AGSTFT Gas Detector



Key Features:

- 24VDC Power Input
- LED Status Indication
- Modern & Compact Design
- Plug & Play Installation
- Standalone Detector or Used With An AGS Controls Controller
- Modbus Communications
- Alarm Relay Dry Contact
- In-Built Audible Alarm

Product Overview:

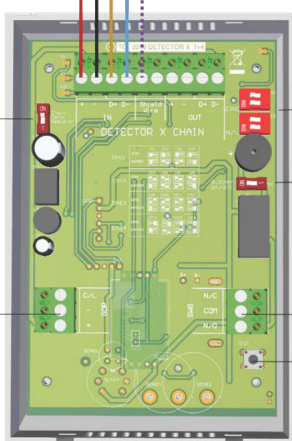
The AGS Controls TFT Detector is a standalone gas detector that operates on 24VDC power input. It features a modern, compact design with an LED status display, BMS/BAS communications, and an in-built audible alarm. With plug & play installation, an alarm relay dry contact, and support for various gases like natural gas, carbon monoxide, LPG, hydrogen, nitrogen dioxide, and carbon dioxide, the TFT Detector offers flexible monitoring options.

Gases Available

- Natural Gas (CH₄)
- Carbon Monoxide (CO)
- LPG (C₃H₈)
- Hydrogen (H₂)
- Oxygen Depletion/Enrichment (O₂)
- Nitrogen Dioxide (NO₂)
- Carbon Dioxide (CO₂)
- Refrigerant (40 Gases Available)

24Vdc Power Input/Output & Data
Compatible with the Merlin GDP-X range.

Resistance Termination
120ohm Switch



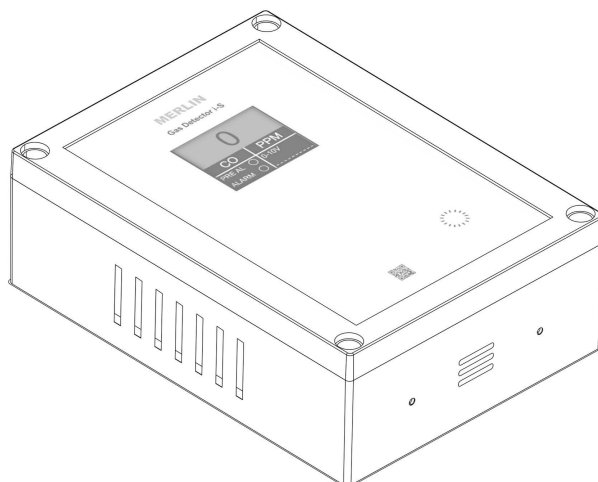
Detector ID Switches

Audible Buzzer Alarm
On/Off Switch

24Vdc Power & Current Loop
Compatible with the Merlin GDP range

BMS Integration

Circuit Simulation Test Button



AGSTFT Detector Technical Specifications

General

Model:	AGSTFT Detector
Target Gases:	Listed Below
Size: (H x W x D)	5.51 x 3.74 x 1.18" (140 x 95 x 30mm)
Housing Material:	ABS Polylac - PA765
Mounting:	IFT A.F.F. - Indoor Use - Wall Mounted
Weight	Max. 1.77oz

User Interface

Display	1.8" TFT
Screen Brightness:	Non-Adjustable
Visual Indicators:	TFT visual. Green: Normal; Yellow: Pre-Alarm; Red: Alarm
Audible Alarm:	>70dB @ 3.28ft (1m). Quiet conditions
Buttons:	None
Language:	English

Power Supply

Power Consumption:	90mA Max @ 24vdc
DC Power:	12-32 VDC - Nominal 24 VDC
Internal Fuse:	None

Equipment

Overvoltage Category:	III
Pollution Degree:	3

I/O

Relay:	Volt Free (Normally Closed / Common / Normally Open) 1x 30vdc 2A (Non-Latching)
--------	---

Environmental

Ingress Protection:	Not Formally Evaluated
Operating:	-10 ~ 50°C / 14 ~ 122°F 30 ~ 80% RH (non-condensing)
Storage:	-25 ~ 50°C / -13~122°F up to 95% RH (non-condensing)
Altitude Rating:	<6500ft

Wiring

Typical	#15AWG Power Pair; #18AWG Data Pair-Tinned copper.
---------	--

Approvals

Electromagnetic Compatibility and Electrical Safety	BS/IEC/EN 61010-1 EMC EN 50270
---	-----------------------------------

Other

Communication	RS485 MODBUS RTU
---------------	------------------

Sensor Specifications

	NGTFT	LPGTFT	HTFT	NO2TFT	CO2TFT	COTFT	O2TFT
Indicating Range	0-20% LEL	0-20% LEL	0-20% LEL	0-20ppm	0-5000ppm	0-999ppm	0-30% V/V
Alarm 1 (Pre Alarm)	<8% LEL	<8% LEL	<8% LEL	<0.7ppm	<800ppm	<20ppm	<19.5% V/V
Alarm 2 (Alarm)	<10% LEL	<10% LEL	<10% LEL	<2ppm	<1000ppm	<See Below	<23% V/V
End Of Life	10 Years	10 Years	10 Years	3 Years	10 Years	5 Years	2 Years

Carbon Monoxide TWA Exposure Alarm Levels: <20ppm @2 hours <50ppm @ 1 hour <100ppm @ 10 minutes <300ppm @ 1 minute