

INSTALLATION GUIDE

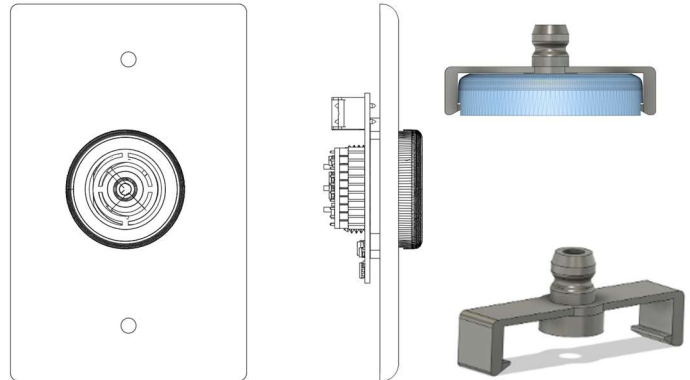
GDM-XXX-R Remote Gas Detection Module

The GDM-XXX-R is a remote gas sensor specifically designed to integrate with the GM range of gas monitors.

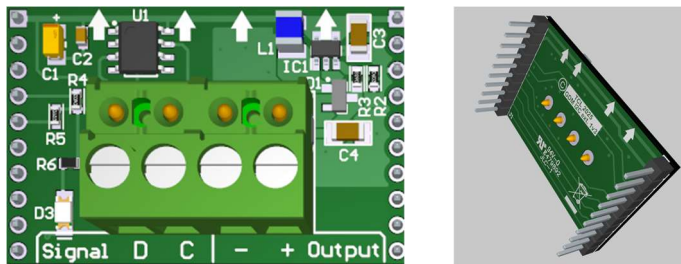
! Can only be used with and powered from an AGS GM gas monitor.

GDM-NO2-R

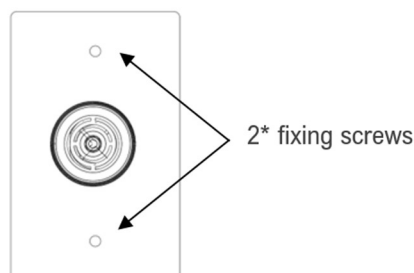
Gas Type	Description
CO	Carbon Monoxide
NO2	Nitrogen Dioxide
CH4	Methane - Nat. Gas
H2	Hydrogen
LPG	Butane / Propane



1. If the GDM has been ordered with a GM gas monitor, then follow the wiring diagram to connect the GDM-R remote module to the GM monitor using 18AWG shielded cable <5M.
2. If the GDM has been purchased as a conversion kit, it will be supplied with the extension module PCB. Remove it from the anti-static packaging and carefully plug it to the required GM monitor's sensor slot, taking special care not to damage the connection pins. Then follow the wiring diagram to connect to the GM monitor using 18AWG shielded cable <5M.



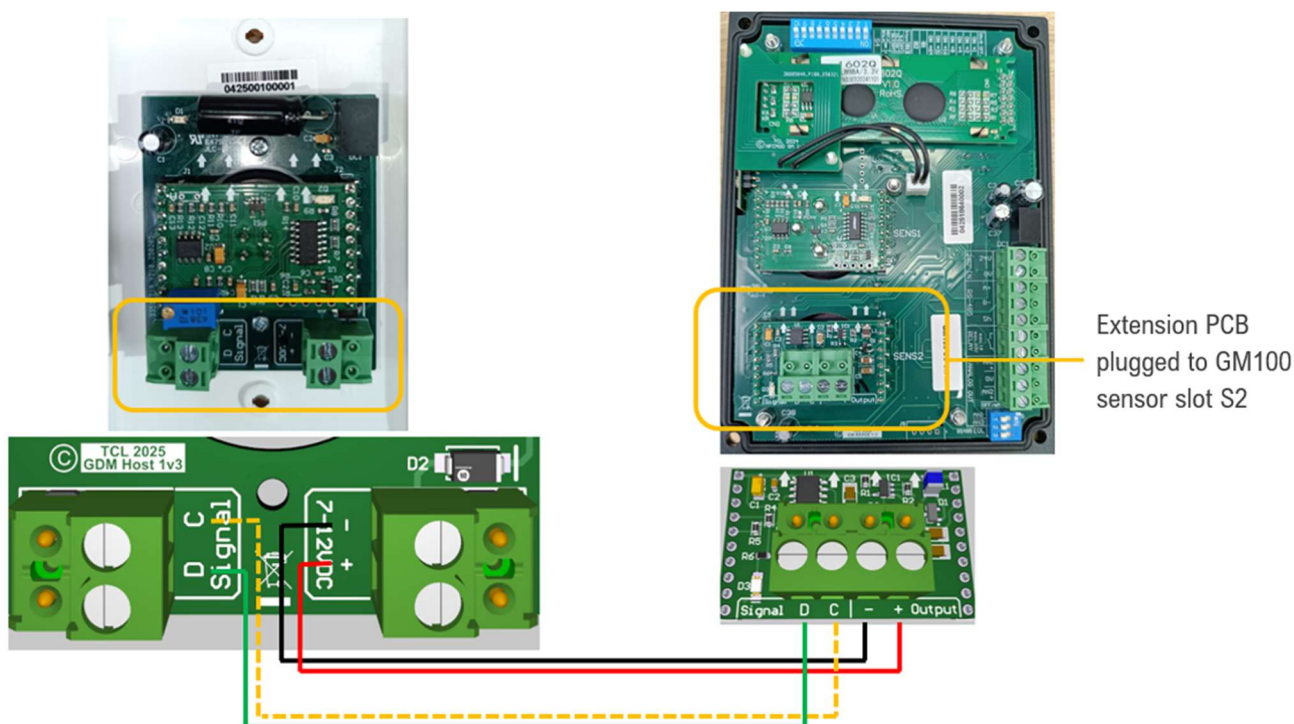
3. Screw the modules electrical face plate to a standard electrical box using the fixing screws provided. Position at a suitable height for the target test gas and following all local code requirements, see the Positioning section for typical install heights.



4. Use the attachment clip to connect a fixed calibration tube to the sensor vent for bump testing.

INSTALLATION GUIDE

GDM-XXX-R Remote Gas Detection Module



Positioning

Generally, the installation height of a sensor for a heavy gas (e.g., LPG) would be close to the lowest point in the area, and for a light gas (such as methane or hydrogen) would be close to the highest point in the area. These typical heights may vary based on applications; users should evaluate code requirements for each install.

Target Gas

Typical Install Height

Carbon Monoxide (CO)	Breathing Zone – 4 - 6ft from ground level.
Nitrogen Dioxide (NO ₂)	Breathing Zone or, Low Level - 1ft from ground level.
Carbon Dioxide (CO ₂)	Breathing Zone - 1700mm (5ft 6") from ground level
Natural Gas (NG) / Methane (CH ₄)	High Level - 300mm (1ft) from ceiling
Propane / Butane (LPG)	Low Level - 300mm (1ft) from ground level
Hydrogen (H ₂)	High Level - 300mm (1ft) from ceiling
Oxygen (O ₂)	Breathing Zone – 4 - 6ft from ground level.

American Gas Safety LLC

www.americangassafety.com

Head office:

6304 Benjamin Road, Suite 502, Tampa, FL 33634

Tel: (727) 608-4375

Email: info@americangassafety.com

American Gas Safety LLC is the owner of this document and reserves all rights of modification without prior notice.